

# CERTIFICATE OF LOCATION OF GOVERNMENT CORNER

NORTHEAST Corner of Section 14, Township 107 N., Range 40 W., 5<sup>th</sup> P.M.

STATE OF MINNESOTA, County of MURRAY

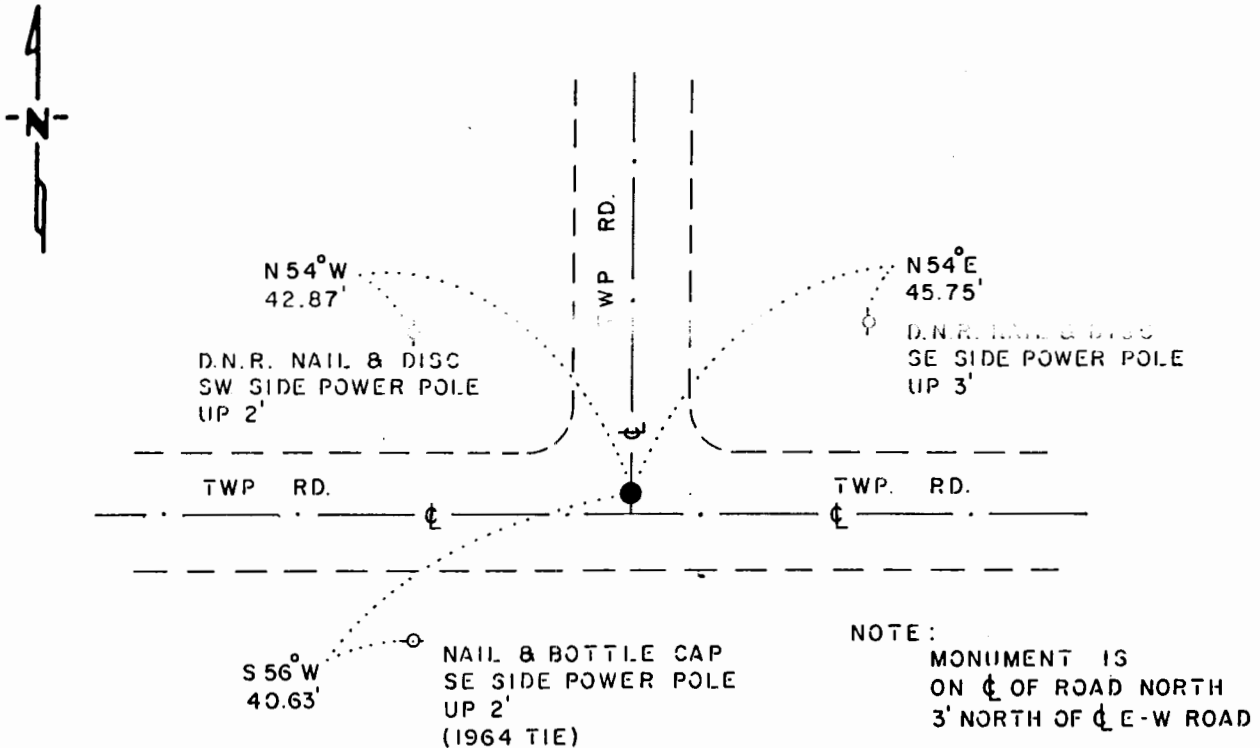
At the corner location shown on the sketch:

On 7-2-85 found a 10"x12"x22" STONE, DOWN 1.7'  
DATE

left monument as found,  lowered monument,  removed monument (explain)

On 7-2-85 placed a 1 1/4"x1 1/4"x16" PERFORATED STEEL TUBE WITH  
DATE  
ALUMINUM CAP STAMPED "D.N.R. SURVEY MARKER" OVER STONE, DOWN 0.4'

### SKETCH OF REFERENCE TIES



### BEARINGS OBSERVED WITH COMPASS

Statement of evidence relative to this corner location is on back of page.

J. B. M. 7-24-85  
G-950

I hereby certify that this document and the data contained herein was prepared by me or under my direct supervision.

Lowell R. Parnas 10-9-85  
SIGNATURE DATE

Registration No. 17005

Land Surveyor,  Professional Engineer

County Surveyor,  County Engineer

### OFFICE OF THE COUNTY RECORDER

County of \_\_\_\_\_

I hereby certify that this document was filed in the Co. Recorders office at \_\_\_\_\_ M. on the \_\_\_\_\_ day of \_\_\_\_\_ A.D., 19\_\_

County Recorder \_\_\_\_\_

By \_\_\_\_\_, Deputy

DOCUMENT NO. \_\_\_\_\_

Northeast Corner Section 14, Township 107 North, Range 40 West

This corner was originally established by the U. S. General Land Office survey in 1861. The government notes show corner marked with a wood post set in mound of earth with pits and trench dug around the mound.

In March 1985, the DNR Bureau of Engineering contacted the Murray County Offices of the Recorder and Highway Engineer for corner information.

The following information was obtained from the DNR Bureau of Engineering's Office:

A 1964 survey shows that a railroad spike was set for corner at the intersection of the center line of roads east, west, and north. The following ties are shown to corner:

nail and bottle cap in southeast side of guy pole, southwest, 37.78 feet

nail and bottle cap in north side of power pole, northwest, 46.05 feet

nail and bottle cap in northwest side of power pole, northeast, 49.00 feet

nail and bottle cap in northeast side of telephone pole, southeast, 40.47 feet

2644.28 feet from the north quarter corner of Section 14

2654.75 feet from the north quarter corner of Section 13

A 1971 survey shows that a railroad spike was found at corner per 1964 survey. Corner is shown:

2645.10 feet from the north quarter corner of Section 14

2654.75 feet from the north quarter corner of Section 13

On July 2, 1985, the DNR Bureau of Engineering hired a backhoe operated by Larry Ruppert of Currie to dig for evidence of this corner. A 10 inch by 12 inch by 22 inch stone was found down 1.7 feet at natural ground. Pieces of iron were set on the east and west sides of stone and a DNR Survey Markey was set over it. Searched for and found record ties as shown on sketch of ties. The stone was found to be:

2654.51 feet from the north quarter corner of Section 13

2612.87 feet from the east quarter corner of Section 14

on center line of road north and 3 feet north of center line east-west road

Accept the stone as the location of the corner.

Traverse information is available from the DNR Bureau of Engineering.